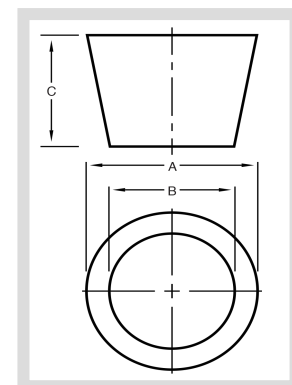




# Solid Rubber Stoppers



Part#	Size	Dimensions (mm)			Dimensions (in)			Pcs./Lb.
		Top (A)	Bottom (B)	Length (C)	Top (A)	Bottom (B)	Length (C)	
CLS-000-S-10B40	000	12	9	18	0.472	0.354	0.709	180
CLS-00-S-10B40	00	15	10	25	0.591	0.394	0.984	105
CLS-0-S-10B40	0	17	13	25	0.669	0.512	0.984	77
CLS-01-S-10B40	1	19	14	25	0.748	0.551	0.984	57
CLS-02-S-10B40	2	20	16	25	0.787	0.630	0.984	52
CLS-03-S-10B40	3	24	18	25	0.945	0.709	0.984	39
CLS-04-S-10B40	4	26	20	25	1.024	0.787	0.984	33
CLS-05-S-10B40	5	27	23	25	1.063	0.906	0.984	28
CLS-05.5-S-10B40	5 1/2	28	24	25	1.102	0.945	0.984	26
CLS-06-S-10B40	6	32	26	25	1.260	1.024	0.984	20
CLS-06.5-S-10B40	6 1/2	34	27	25	1.339	1.063	0.984	18
CLS-07-S-10B40	7	37	30	25	1.457	1.181	0.984	15
CLS-07.5-S-10B40	7 1/2	39	31	25	1.535	1.220	0.984	14
CLS-08-S-10B40	8	41	33	25	1.614	1.299	0.984	12
CLS-08.5-S-10B40	8 1/2	43	36	25	1.693	1.417	0.984	11
CLS-09-S-10B40	9	45	37	25	1.772	1.457	0.984	10
CLS-09.5-S-10B40	9 1/2	46	38	25	1.811	1.496	0.984	9
CLS-10-S-10B40	10	50	42	25	1.969	1.654	0.984	6



# Solid Rubber Stoppers

Part#	Size	Dimensions (mm)			Dimensions (in)			Pcs./Lb.
		Top (A)	Bottom (B)	Length (C)	Top (A)	Bottom (B)	Length (C)	
CLS-10.5-S-10B40	10 1/2	53	45	25	2.087	1.772	0.984	7
CLS-11-S-10B40	11	56	48	25	2.205	1.890	0.984	6
CLS-11.5-S-10B40	11 1/2	63	50	25	2.480	1.969	0.984	5
CLS-12-S-10B40	12	64	54	25	2.520	2.126	0.984	5
CLS-13-S-10B40	13	68	58	25	2.677	2.283	0.984	4
CLS-13.5-S-10B40	13 1/2	75	62	35	2.953	2.441	1.378	3
CLS-14-S-10B40	14	90	75	39	3.543	2.953	1.535	1.6
CLS-15-S-10B40	15	103	83	39	4.055	3.268	1.535	1.3